

ROMYNOX



IRIS VALVE

TRANSFER PORT SOLUTION

The ROMYNOX Iris valves are specially designed as a transfer-port solution between two clean rooms in combination with our Mousehole transfer port. In this way you can move large volumes of liquids without the risk of bin breakage or spillage during bin transfer.

The Iris valves have been specifically designed for applications demanding the highest level of hygiene normally associated with Cleanroom applications in the biopharmaceutical market.



FLEXIBLE SLEEVE

The flexible iris sleeve is made of **EPDM**, which creates an airtight barrier no matter what hose or tube you put through it. The sleeve can be replaced quickly and easily, which we advise to do so every year. The Iris valve is made of 100% biopharmaceutical approved and certified materials. The revolutionary light weight design makes it easy for everybody to use and install.



TEMPERATURE RANGE

2° to 40° Celcius

CONNECTIONS

Tri-Clamp

MATERIAL

Body & connections:

Polyoxymethylene (POM-C, white)

Iris sleeve: EPDM (white)

Steel components:

Stainless Steel 304

CLEANABILITY

- Isopropyl alcohol 99,9%
- Ethanol 99,8%
- Actisan
- Hydrogen peroxide 10%

SIZES

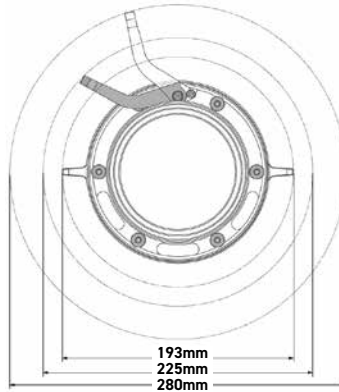
| Size | Weight |
|------|--------|
|------|--------|

| | |
|----|--------|
| 4" | 1,3 KG |
|----|--------|

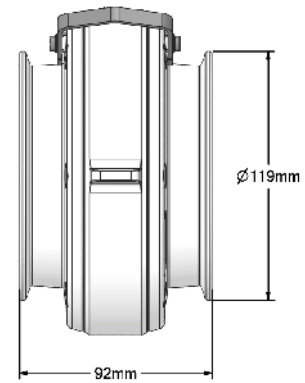
| | |
|----|--------|
| 6" | 2,5 KG |
|----|--------|



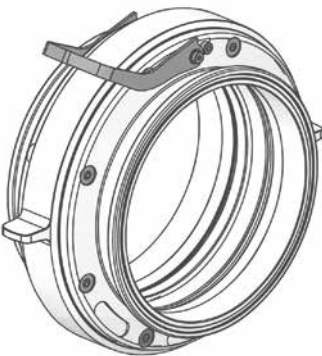
4" - 3D MODEL



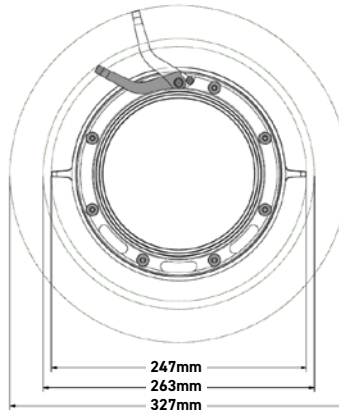
4" - FRONT MEASURES



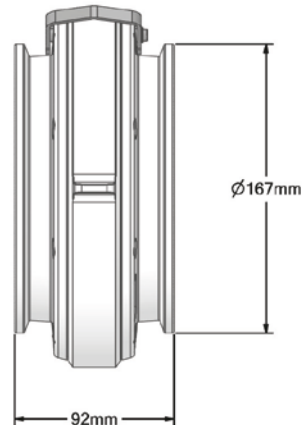
4" - SIDE MEASURES



6" - 3D MODEL



6" - FRONT MEASURES



6" - SIDE MEASURES



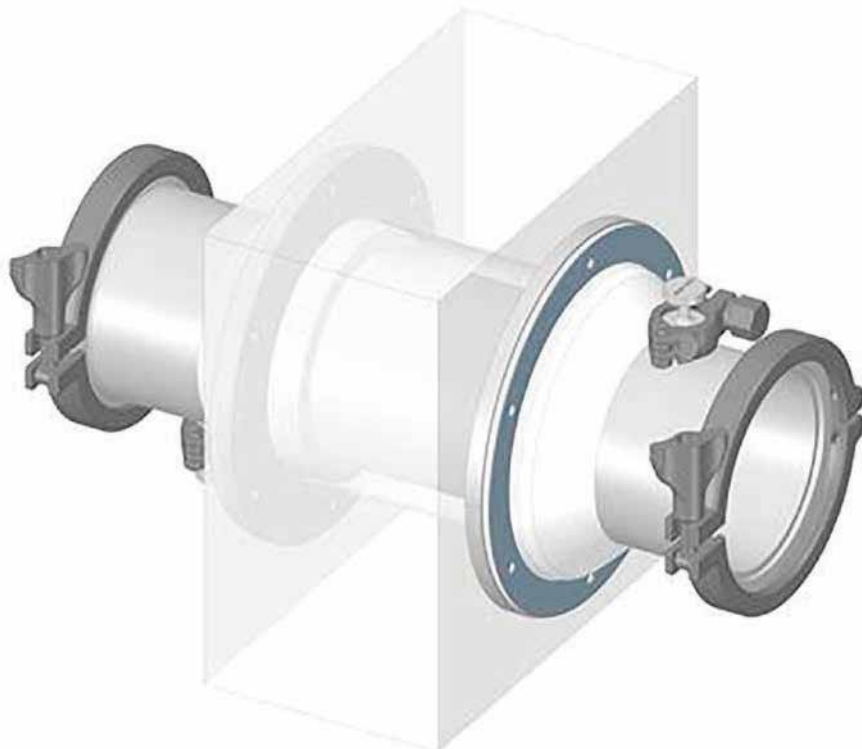
MOUSEHOLE

The ROMYNOX Mousehole is a simple yet effective way to transfer liquids and/or product between two cleanrooms. You can move large quantities of liquids in a cleanroom without moving a product vessel. This reduces the passage of personnel to processing areas, labor and minimizes the risk of crosscontamination, bin breakage or spillage.

The Mousehole is system consisting of a stainless steel pass-through wall portal with a triclamp connection on both sides. There are two optional extra's for the Mousehole. We can add a purge port to the design. It's also possible to add a position indicator on both sides of the Mousehole. A version of the transfer port with both options is also possible.

The Mousehole can be expanded modularly with:

- The Iris Valve provides a dust-tight seal, regardless of the thickness of your hose, and minimizes airflow. It is mainly used in the upstream process.
- The Romy-Pass creates an airtight barrier and is cleanroom assembled and gamma irradiated according to your request. This varies from size, multiple types of tubing, connectors, clamps, seals, flanges and modular packaging. For more information, visit our website.





STANDARD DELIVERED WITH:

- 1 x Portal
Material: Stainless Steel 316L
- 2 x Gaskets
Material: Silicone
- 2 x Solid End Caps
Material: Stainless steel 316L
- 2 x Tri-Clamps LAH
Material: 304SS
- 2 x Pipettites
Material: Silicone with Stainless Steel Ring
- 2 x Support Ring
Material: Nylon
- Installation guide



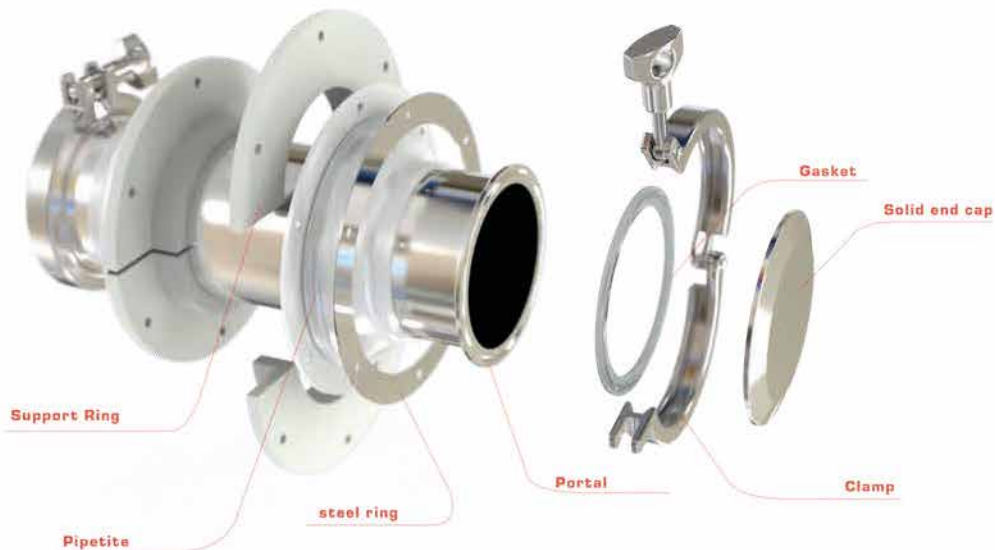
| Size | Ø A | B | Wall (C) min. | Wall (C) max. | Availability |
|----------|-------|-----|---------------|---------------|--------------|
| 2" | 50.8 | 280 | 50 | 125 | Available |
| 4" | 101.6 | 280 | 50 | 125 | Available |
| 4" | 101.6 | 380 | 126 | 250 | Available |
| 6" | 152.4 | 280 | 50 | 125 | Available |
| 6" | 152.4 | 380 | 126 | 250 | Available |
| 2" to 8" | | | 50.8 | 2000 | On request |

FINISHES

SF1

CERTIFICATES

USP Class VI 121° Celsius, <87>, <88>, 3.1 material, FDA (on Gaskets and Pipettites), TSE/BSE





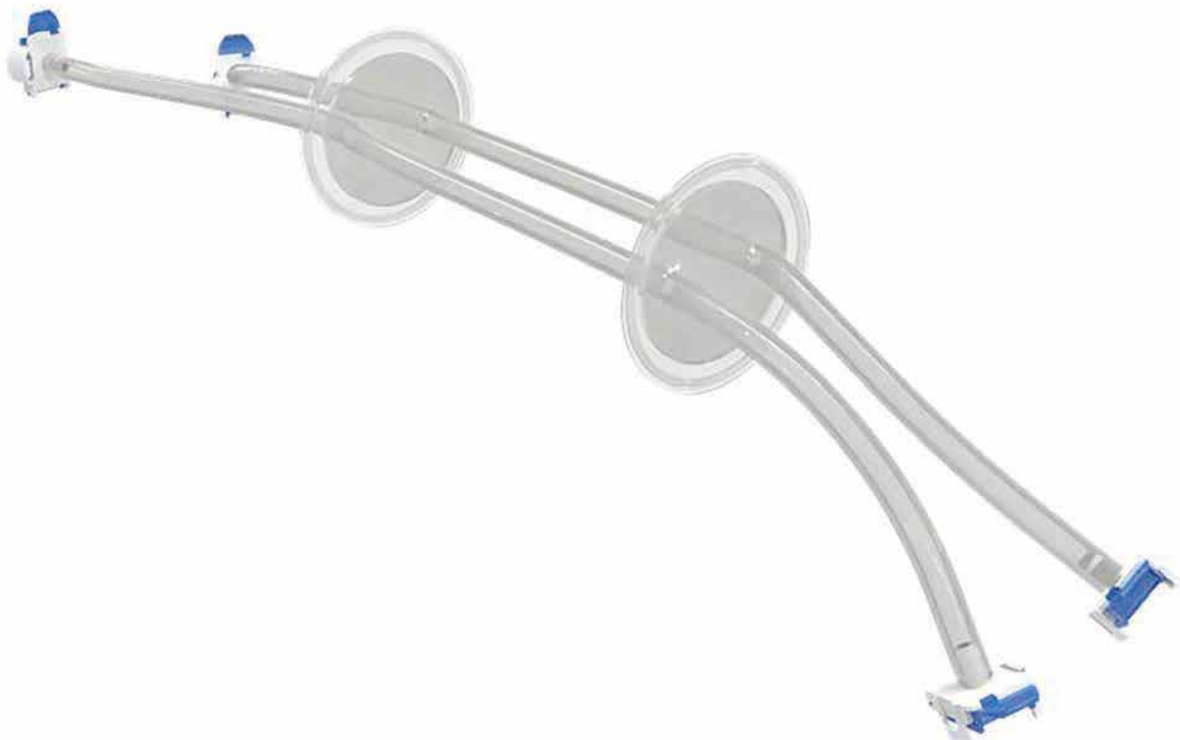
ROMY-PASS

The Romy-Pass is designed for aseptic transfer of liquids between two cleanrooms. This allows you to easily and safely move large volumes of liquids while creating an airtight barrier. This solution eliminates the need to move your product vessel into the cleanroom, minimizing the risk of cross-contamination by reducing the passage of personnel to processing areas and reducing labor. In addition, breakage of the container or spillage is minimized.



CUSTOM ENGINEERED

The Romy-Pass is custom made to your specifications to support your most critical process steps! It is suitable for various wall sizes, a lot of different connection types and consists of two silicone discs that are mounted to the mouse hole with sanitary clamps. Depending on the size, multiple tubing can be placed through the Romy-Pass. The assembly ranges from disc sizes, tube sizes, connectors and modular packaging. The single use assembly minimizes cleaning and validation-related downtime between each replacement.





CONNECTIONS

Tri-Clamp

MATERIAL

Disks: Silicone

SIZES

Custom engineered

